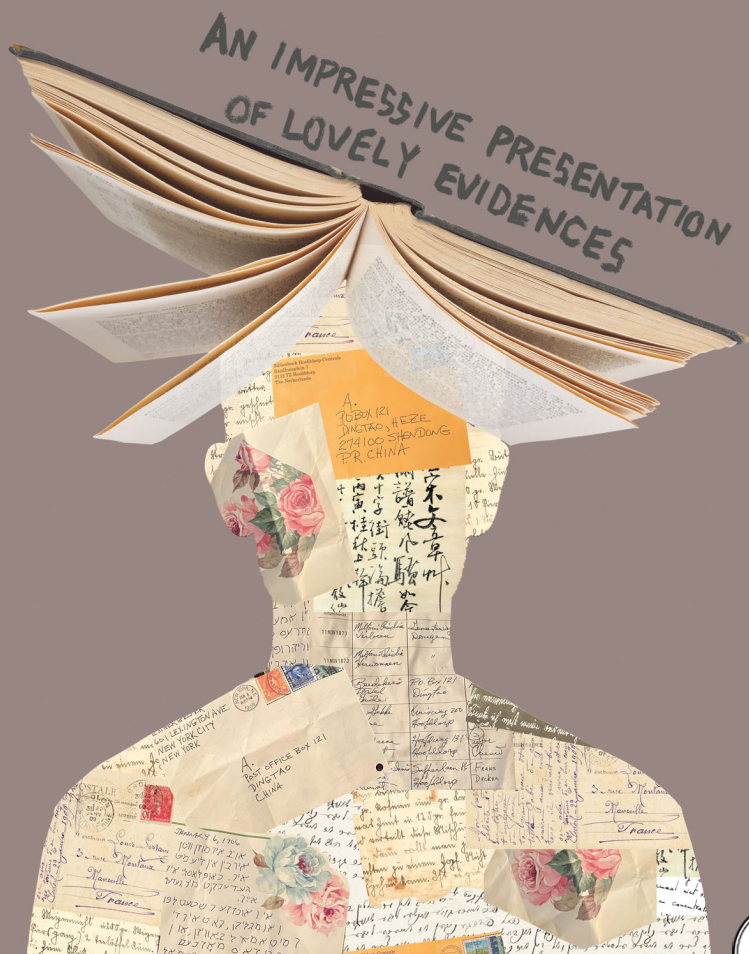


Starkville Community Theatre presents

Glen Berger's  
**Underneath  
the LINTEL**



AN IMPRESSIVE PRESENTATION  
OF LOVELY EVIDENCES

February 28, 2023 | 7 pm



# Underneath the Lintel

By Glen Berger



The Librarian ..... Kris Lee

## Production Crew

Director ..... Paula Mabry  
 Assistant Director / Stage Manager ..... Pattye Archer  
 Properties & Evidences ..... Edwin Ellis  
 Scenic Design ..... Pattye Archer  
 Technical Director ..... Thomas La Foe  
 Crew ..... Madeline Golden  
 Lighting Operator ..... Thomas La Foe

## Special Thanks

Garrett Torbert, Music  
 Jay Murphy and Starkville Properties  
 First United Methodist Church  
 Melanie Harris and Theatre MSU  
 Jeff Glassheim | Ben Nagel | Anthony Daniel  
 Debbie Dunaway | Dianna Janus | Marsha Williams

# Music

*The Wandering Jew*, Goldfaden, A. & Russotto, H.,  
recorded by Garrett Torbert.

Music is in the public domain.

The sheet music came from the Library of Congress.

# Setting

Here. Now.

THE LIBRARIAN has rented a space - a theatre not currently in use - for the night. As you can see, he didn't have much to spend on it.

# About

*Underneath the Lintel* won Best Production at the 2023 Mississippi Theatre Association Festival, held in January in Tupelo. As the winner of MTA, the show advances to the Southeastern Theatre Conference Festival in Lexington, KY. SCT will perform at the Pam Miller Downtown Arts Center on Thursday, March 2 at 7 p.m. The top two winners from SETC will advance to compete at the American Association of Community Theatre's AACTFest in Louisville, KY in June.

Thank you for your continued support.

[www.sct-online.org](http://www.sct-online.org)

[www.facebook.com/groups/starkvilletheatre](https://www.facebook.com/groups/starkvilletheatre)

Originally produced professionally Off-Broadway at the Soho Playhouse. *Underneath the Lintel* is produced by special arrangement with Broadway Play Publishing Inc, NYC - [www.broadwayplaypub.com](http://www.broadwayplaypub.com).

This production is supported in part by funding from the Mississippi Arts Commission, a state agency, and the National Endowment for the Arts, a federal agency.

# STARKVILLE COMMUNITY THEATRE

## 2022-2023 SPONSORS AND PATRONS

### PRODUCTION SPONSORS

Barbara Coats, FICF, RICP -  
Modern Woodmen of America

City of Starkville

Paula Mabry

Mississippi Arts Commission

Renasant Bank

Spruill Property Management

Starkville Convention

and Visitors Bureau

Starkville Oktibbeha Unity League

Starkville Pediatric Clinic

### SEASON SPONSORS

Walter and Susan Diehl

Turner and Gloria Wingo

### PLATINUM PATRONS

Clay and Joan Butler Taylor

### GOLD PATRONS

\*Alice Carol Caldwell

Jim and Suzy Turner

### SILVER PATRONS

Ann Bonner

Bob and Deb Bresnahan

Robert and Pam Collins

Debbie and Greg Dunaway

\*Wayne and Jo Durst

Andrew and Aimee Gaston

\*Billie Lane Hood

Lauren and Matthew Priddy

Cindy and Paul Ruff

\*Clyde and Marsha Williams

### PATRONS

Michelle Amos and

Jean Amos Faver

Vernon and Terry Ammon

Frank and Ann Chiles

\*Ed and Barbara Clynych

\*Amy and Sid Crigler

Tani and Elliott Dubuisson

Jim and Kathleen Gafford

Donald and Brenda Grebner

\*Bob and Elizabeth Hawkins

Pam and Eddie Helms

John Hendricks

Rob and Vicki Leach

Carol and Mark Lehman

Linda and Dave Morse

Joan and John Mylroie

Marco and Mary Sue Nicovich

\*Bonnie Oppenheimer

Cathy Pittman

\*Keith and Ruth Remy

\*Charles and Martha C. Sparrow

Starkville Real Estate Company

Wanda and Mike Thorne

\*Sherrie & Christie Van

Landingham

Johnny and Bobbie Walton

Bruce Welch

Martha and Graham Wells

\*Paul Williams

\*Robert and Joan Wilson